



VidyoPortal Installation Guide

Prior to setting up your VidyoPortal, you should have the following information ready:

VidyoPortal Static IP Address: _____.

Subnet Mask: _____.

Router (Gateway) Address: _____.

DNS Server (Primary): _____.

DNS Server (Secondary): _____.

VidyoPortal URL: _____

(recommended) {Ex: vidyo.yourdomain.com}

Below are your VidyoPortal License Keys, you will need to enter these during the setup process.



Lastly, you will need the following items in order to setup your VidyoConferencing System:

- Ethernet cable for connecting the unit to your network.
- PC with Browser installed.
- USB or PS2 Keyboard and VGA Display.
- Optional: For optional Initial Network Settings method: Ethernet Cable and PC, or PC connected on the exact same switch as the VidyoGateway server.

Package Contents

- The VidyoConferencing System – VidyoPortal package contains the following items:
 - VidyoPortal 1U Server Appliance.
 - Power Cable(s).
 - Rack mount ears.
 - Documentation CD.

A) Connecting the System and Setting the Network Information:

- Connect the power cord to the server and plug in to power outlet.
- Connect VGA display to VGA port in rear or server.
- Connect USB Keyboard to any of the USB ports or PS2 Keyboard to the rear KB port.
- Connect the server to your network using an Ethernet cable (be sure to use the Ethernet port on the back of the server closest to the power supply (on the left when looking at the unit from the rear).
- Power on the server by pressing the Power Button located on the front of the unit.
- Once booted, Press Enter on the Keyboard to get the Login prompt:

```
login as: admin
admin@192.168.1.100's password: █
```

- Default Login is: **admin** & Default password is: **password**

```
System Administrator Console Version 1.1

Local Time: Sun Apr  5 14:03:49 EDT 2009
Universal Time: Sun Apr  5 18:03:49 UTC 2009

1. Configure IP Address
2. Configure DNS Nameserver
3. Configure NTP Time Servers
4. Configure Time Zone
5. Display IP Address
6. Display Host & Domain Names
7. Query NTP Time Servers
8. Display Kernel IP Routing Table
9. Display ARP Table
10. Ping Utility
11. Traceroute Utility
12. Set 'admin' password
13. Reboot system
14. Shutdown System

x. Exit System Administrator Console

Selection: █
```

- You should then see the screen above.
- Select Option 1 to set your VidyoPortal's Network Info:

```
IP Address Mode: STATIC

IP Address: 192.168.1.100
Subnet Mask: 255.255.255.0
Default Gateway: 192.168.1.1

eth0    Link encap:Ethernet  HWaddr 00:01:80:77:46:11
        inet addr:192.168.1.100  Bcast:192.168.1.255  Mask:255.255.255.0
        inet6 addr: fe80::201:80ff:fe77:4611/64 Scope:Link
        UP BROADCAST RUNNING MULTICAST  MTU:1500  Metric:1
        RX packets:86 errors:0 dropped:203785046 overruns:0 frame:0
        TX packets:348 errors:0 dropped:0 overruns:0 carrier:0
        collisions:0 txqueuelen:1000
        RX bytes:9936 (9.7 KB)  TX bytes:32713 (31.9 KB)
        Interrupt:221 Base address:0x2000

Would you like to change current settings? [y/n]y █
```

```

IP Address Mode: STATIC

      IP Address: 192.168.1.100
      Subnet Mask: 255.255.255.0
      Default Gateway: 192.168.1.1

eth0    Link encap:Ethernet  HWaddr 00:01:80:77:46:11
        inet addr:192.168.1.100  Bcast:192.168.1.255  Mask:255.255.255.0
        inet6 addr: fe80::201:80ff:fe77:4611/64 Scope:Link
        UP BROADCAST RUNNING MULTICAST  MTU:1500  Metric:1
        RX packets:86 errors:0 dropped:203785046 overruns:0 frame:0
        TX packets:348 errors:0 dropped:0 overruns:0 carrier:0
        collisions:0 txqueuelen:1000
        RX bytes:9936 (9.7 KB)  TX bytes:32713 (31.9 KB)
        Interrupt:221 Base address:0x2000

Would you like to change current settings? [y/n]y

      IP Address (192.168.1.100): 192.168.1.100
      Subnet Mask (255.255.255.0): 255.255.255.0
      Default Gateway (192.168.1.1): 192.168.1.1
  
```

Enter your appropriate Network Settings for your Portal

```

IP Address Mode: STATIC

      IP Address: 192.168.1.100
      Subnet Mask: 255.255.255.0
      Default Gateway: 192.168.1.1

Please Verify New Configuration;
Do you wish to write to networking services? [y/n] y

Please make sure to Reboot Server for all changes to take affect...

Press Enter to Continue...
  
```

If your settings are correct accept and Press Enter.

Select Option 13 to Reboot the Portal:

```

System Administrator Console

      Local Time:Sun Apr  5 14:06:36 EDT 2009
      Universal Time:Sun Apr  5 18:06:36 UTC 2009

1. Configure IP Address
2. Configure DNS Nameserver
3. Configure NTP Time Servers
4. Configure Time Zone
5. Display IP Address
6. Display Host & Domain Names
7. Query NTP Time Servers
8. Display Kernel IP Routing Table
9. Display ARP Table
10. Ping Utility
11. Traceroute Utility
12. Set 'admin' password
13. Reboot system
14. Shutdown System

x. Exit System Administrator Console

Selection: 13
Are you sure you want to reboot? [y/n]: y
  
```

- Once the system reboots, you may Continue below to the section B:
'Enter your VidyoPortal Server Licenses'

Refer to the **Vidyo Server Shell Admin Menu Guide** for more information about the other Shell Admin Menu Options.

A2) ALTERNATE Initial Network Settings Method:

- Connect the server to either your network switch, or directly to your PC using an Ethernet cable.

NOTE: Be sure to use the Ethernet port on the back of the server closest to the power supply (on the left when looking at the unit from the rear).

- Power on the server by pressing the Power Button located on the front of the unit.
- Configure your PC to a fixed IP:

192.168.1.125, Subnet Mask 255.255.255.0 (You can leave gateway blank)

NOTE: Your VidyoPortal comes preconfigured with IP address:

192.168.1.100, mask 255.255.255.0

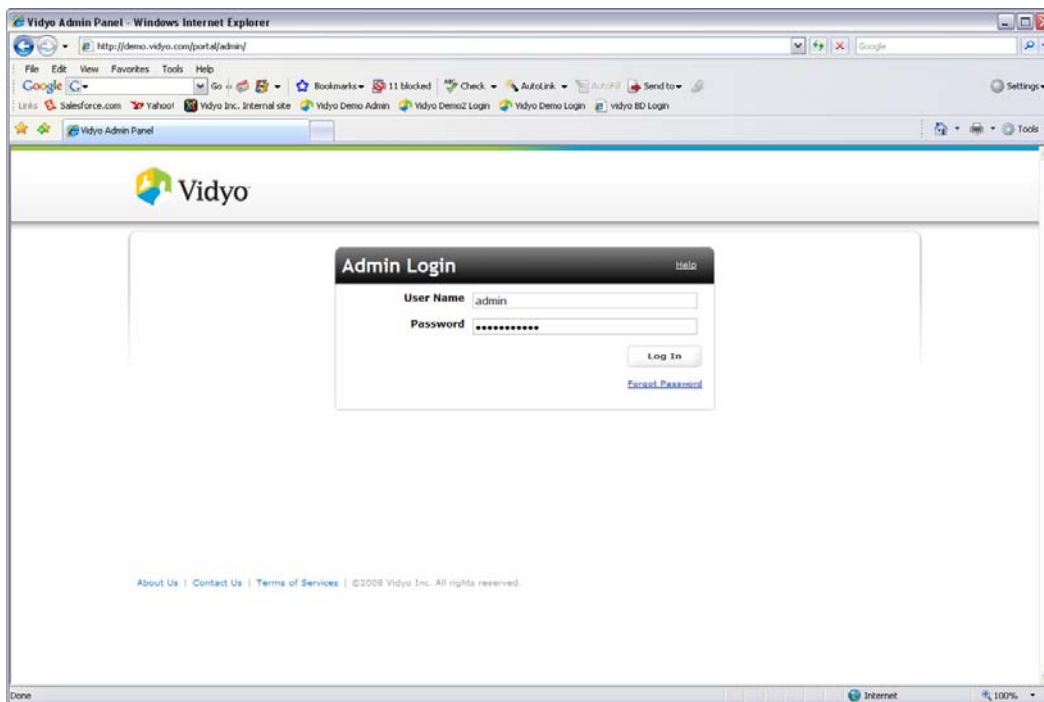
Login to your VidyoPortal Server

- Launch your browser and HTTP to:

<http://192.168.1.100/portal/admin>

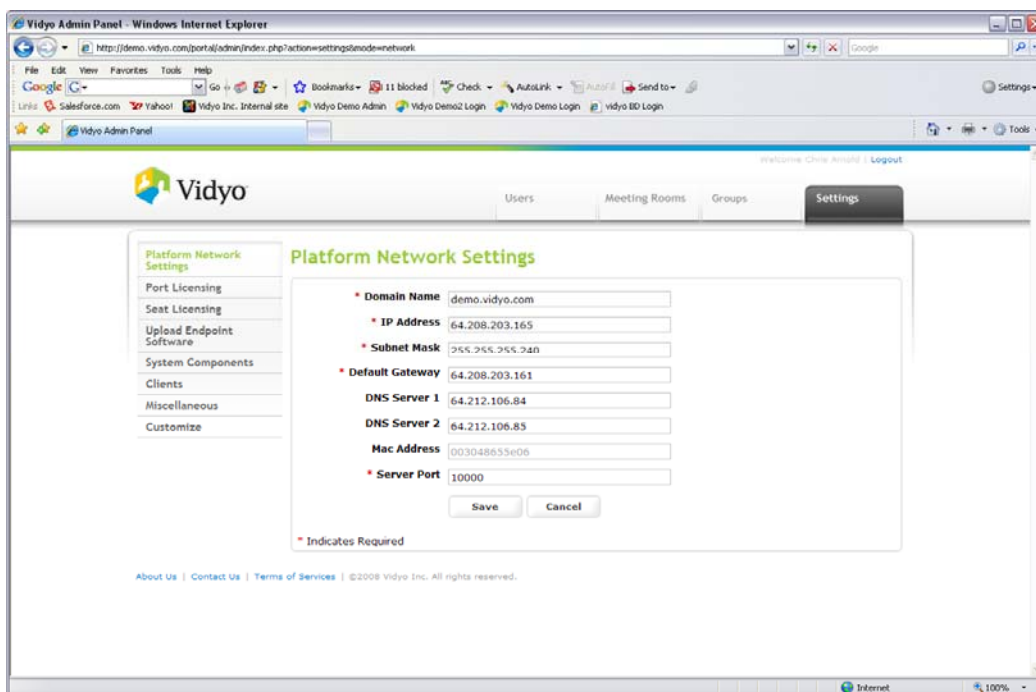
- Login using the Default Administrator Account:

● User Name: **admin**
● Password: **password** (case sensitive)



Configure your VidyoPortal Server Network

- Select the Settings TAB
- Enter your appropriate network settings and press Save



- If you used a direct Ethernet cable to configure your server:
 - Disconnect direct Ethernet cable and connect your server to your switch using an appropriate Cat5e or Cat6 Ethernet patch cable. Then connect your PC to your network.

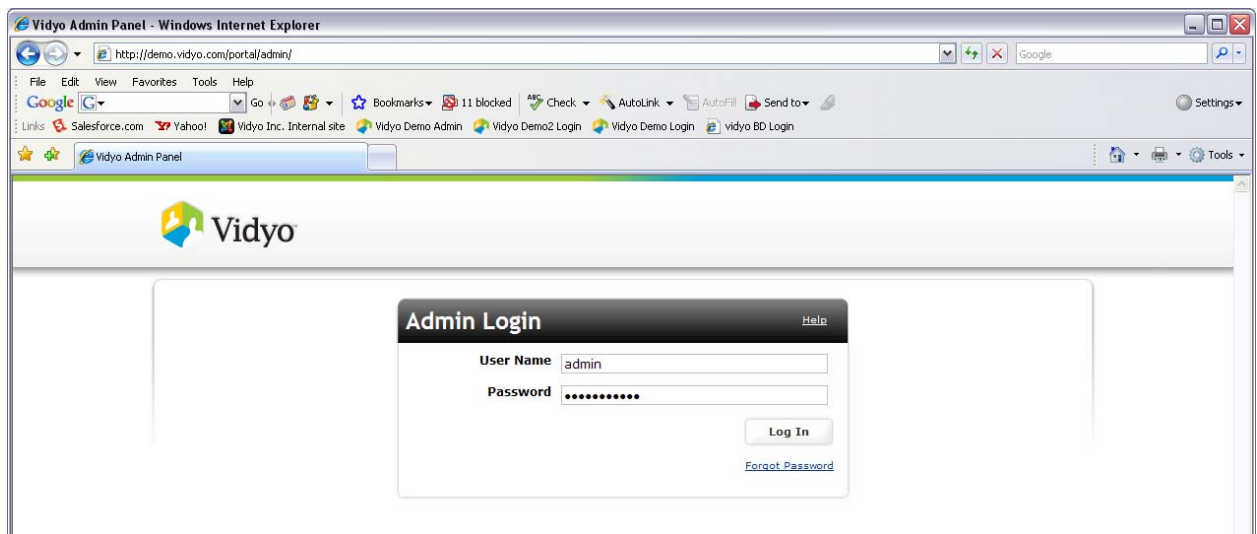
- Reconfigure your PC to DHCP or appropriate Fixed IP settings for your network.

B) Enter your VidyoPortal Server Licenses {NOTE: Usually your licenses will be preinstalled}

- Launch your browser and HTTP to:

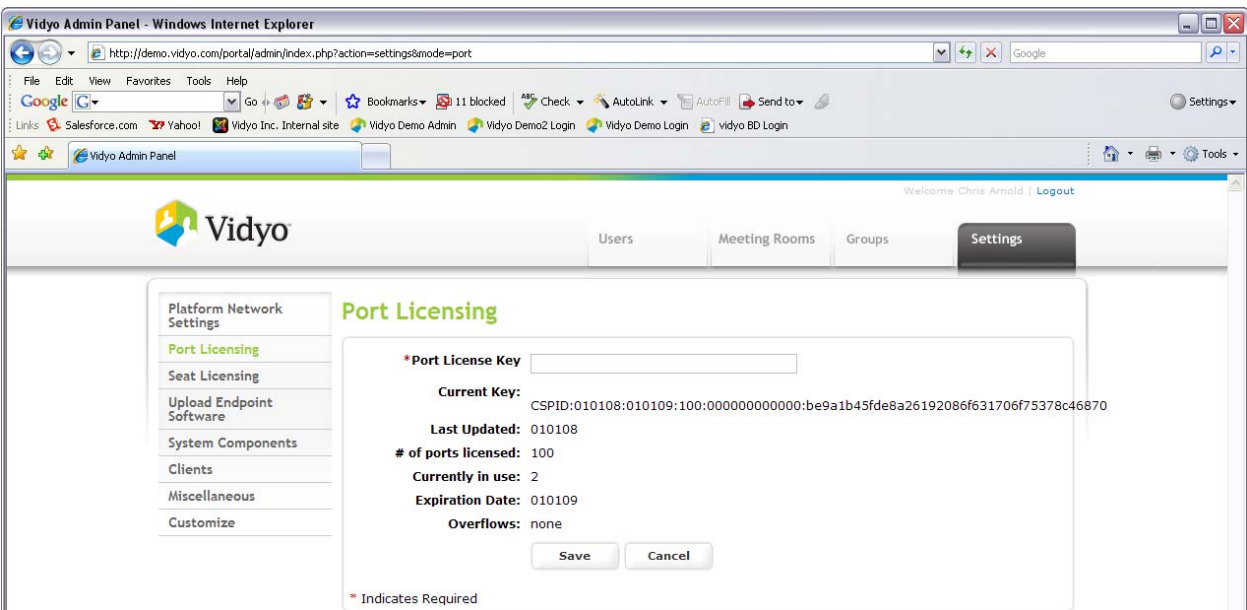
[http://{your Vidyo server IP or URL}/portal/admin](http://your Vidyo server IP or URL/portal/admin)

- Login using the Default Administrator Account:
 - User Name: **admin**
 - Password: **password** (case sensitive)



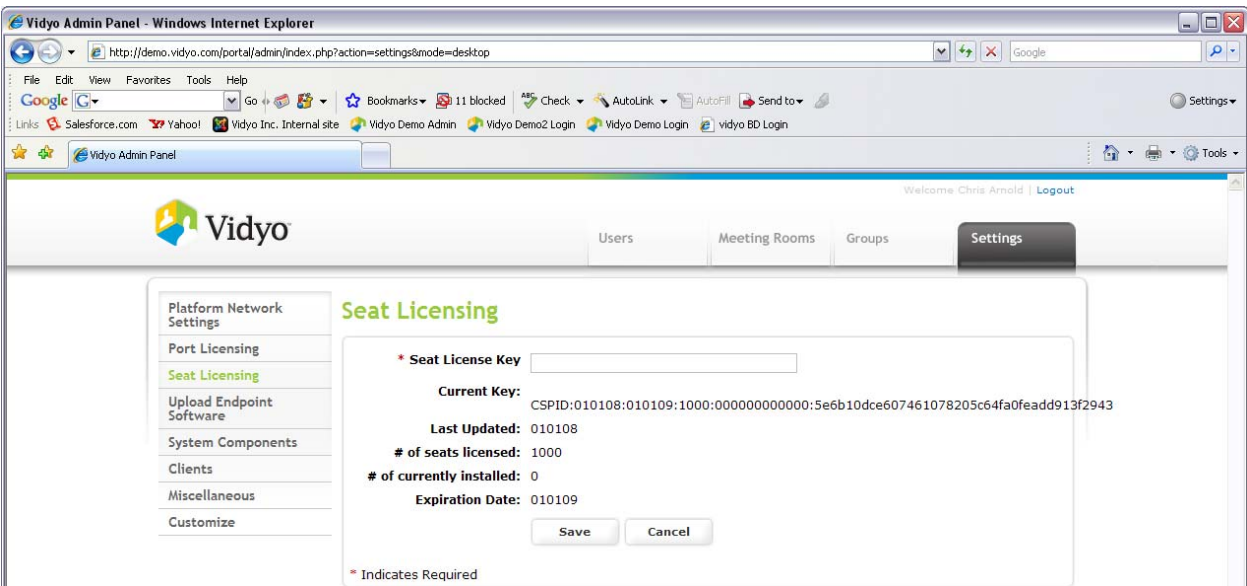
Entering your Port License

- Select the Settings TAB and then Select the Port Licensing sidebar TAB
- Enter your Port License Key (from Page 1 of this guide)
- Press Save
- Verify license accepted and system has appropriate licensed ports



Entering your Seat License

- Select the Settings TAB and then Select the Seat Licensing sidebar TAB
- Enter your Seat License Key (from Page 1 of this guide)
- Press Save
- Verify license accepted and system has appropriate licensed seats



C) Testing Your System

- Your system is now ready for testing.
- Logout of the Admin Portal.
- Login to the Portal User Web

<http://{your Vidyo server IP or URL}/portal/>

You may use the default admin account:

User Name: [admin](#)
Password: [password](#)

- Allow the VidyoDesktop Client to Install (you may need to re-login after)
- Press 'Start My Meeting' to launch a conference.

NOTE: You will only receive 'loop back' video, no audio.



For more information on adding Users and System Administration, refer to the VidyoConferencing-Admin-Guide, located on the Documentation CD-ROM.

For more information on using the VidyoDesktop client, refer to the VidyoConferencing-User-Guide, located on the Documentation CD-ROM.

For Customer Support:

If you are a Vidyo Reseller, please feel free to contact the Vidyo Customer Support team via email or phone:

Please send an email to support@vidyo.com

Or, call **1-866-99-Vidyo - Option 3**

If you are a Vidyo End User, please call your Vidyo Reseller for further details.

Thank you,
Vidyo Support Team