

Overview of the VidyoRoom Remote Control

The VidyoRoom comes with a remote control allowing quick key shortcuts to frequent VidyoRoom activities. It also provides the input mode/keyboard for typing information.

Not In Conference

CONNECT — Start meeting from the homepage.

ARROWS / OK — Use the arrow keys to navigate on-screen. The option you navigate to will be highlighted in green when activated. Press the OK key on the remote to select the option on-screen.

VOLUME / MUTE / SELFVIEW / ZOOM — Volume — adjusts the sound level
Mute — mutes your microphone
Selfview — shows preview monitor and turns control to the camera while preview is shown on the second monitor
Zoom — acts as a page up/page down for scrolling through search results on-screen

ALPHA-NUMERIC KEYPAD — Use these keys in conjunction with the input modes on-screen to key in user names, passwords, speed dials, and search terms.

CONTROL KEYPAD

Back — takes you to the previous screen in the VidyoRoom interface
Manage — brings up the remote control Help screen in the VidyoRoom interface
Home — takes users to the home screen in the VidyoRoom interface
Delete — acts as a backspace when typing in a form field
Settings — brings up the Settings screen
Toggle — refreshes the GUI
A — multifunction key
B — multifunction key
C — multifunction key
D — multifunction key

In Conference

DISCONNECT — Ends meeting

ARROWS / OK — Left/Right — pans camera (if supported by camera)
Up/Down — tilts camera (if supported by camera)
VOLUME / MUTE / SELFVIEW / ZOOM — Volume — adjusts the sound level
Mute — mutes your microphone or recording source
Selfview — cycles through Selfview modes docked, full screen and off
Single Screen Mode — picture-in-picture, docked, full screen and off
Dual Screen Mode — picture-in-picture, docked and off
Zoom — zooms your camera In/Out (if supported by camera)

ALPHA-NUMERIC KEYPAD — 1-8 — sets the number of participants viewed
0 — sets the number of participants back to auto

CONTROL KEYPAD

Manage — brings up the remote control Help screen
Home — resets Camera Pan, Tilt, and Zoom to default position (if supported by camera)
Privacy — toggles Privacy mode, so that no one in the conference can see your video
Share — toggles sharing on and off when using VGA/USB device. Press the "*" button to view shared applications in full screen.
Toggle — cycles through shared sources, including none
A — swaps displays when using Dual Screen mode
C — Toggles Far End Camera Control mode
D — toggles between preferred/non-preferred mode

Getting Started



What Is in This Box:

VidyoRoom HD-220

VidyoRoom HD-220 Accessory Kit:

- VidyoRoom Remote Control
- Batteries, AAA (2)
- Vertical Stand (2)
- Cord, Power, US, 6ft [1.82m] (1)
- Cord, Power, UK, 6ft [1.82m] (1)
- Cord, Power, Europe, 6ft [1.82m] (1)
- Cable, Ethernet, 6ft [1.82m] (1)
- Cable, HDMI/DVI, 6ft [1.82m] (2)
- Adapter, Display Port/DVI (2)
- HD-220 Datasheet
- HD-220 Getting Started Guide
- Vidyo Documentation CD-ROM
- Cable, USB/Serial DB9, 6ft [1.82m] (1)
For use with VISCA cable
- Cable, VISCA Serial, 6ft [1.82m] (1)
VISCA Cable provides PTZ Control
- Rack Mount Kit (1)
See VidyoRoom guide for installation instructions

Optional Purchase Components:

Camera

- Sony EVI-HD7V (1080p)
- Sony EVI-HD3V (720p)
HDMI/DVI cable 6ft [1.82m]
Sony Power Supply
Sony Remote Control

External Infrared Receiver Kit:

- External IR USB Adapter (1)
- Cable, USB A/B, 12ft [3.65m] (1)

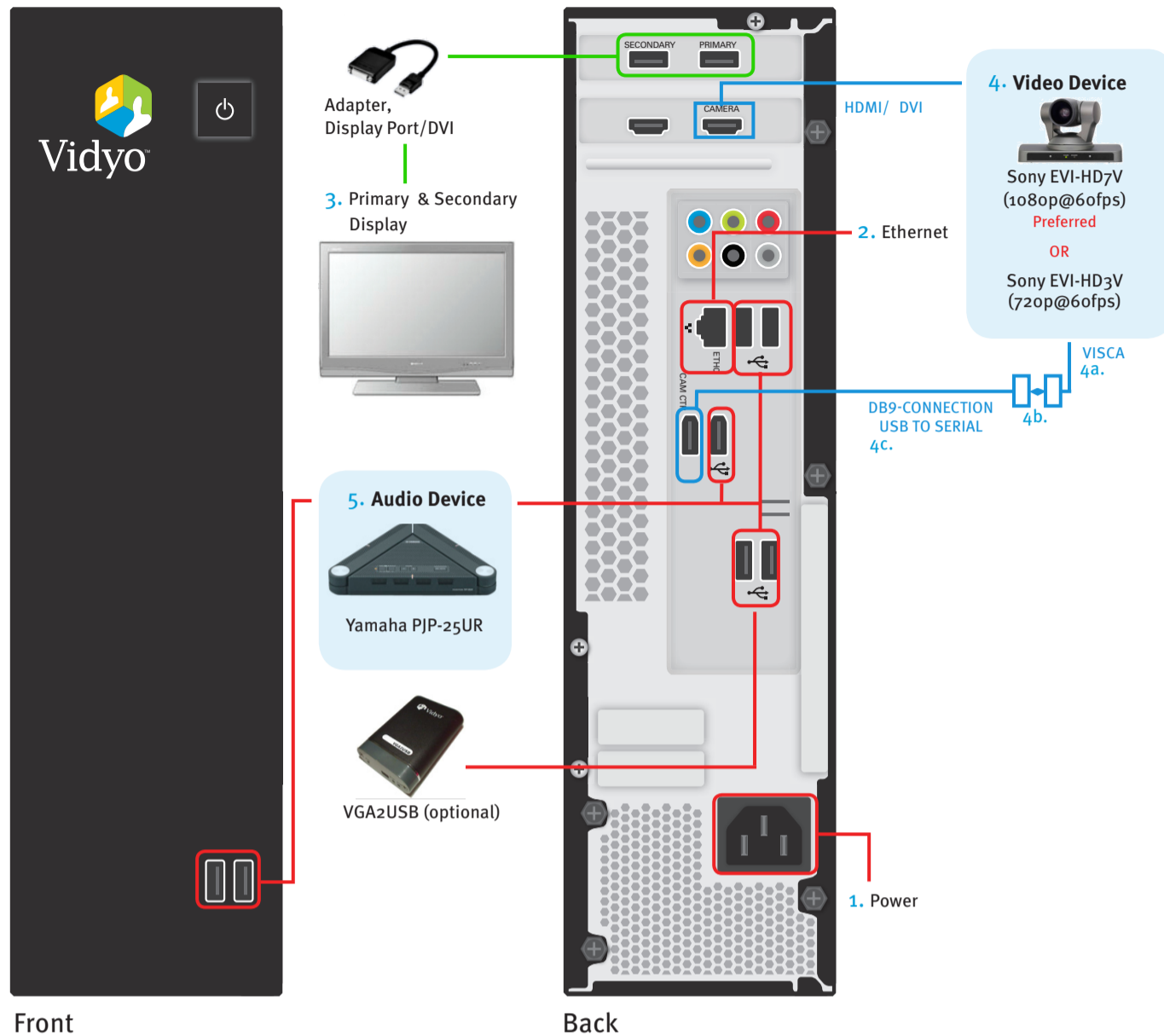
SpeakerPhone Options:

- Yamaha PJP-25UR USB Speakerphone

Screen Share Adapter Kit:

- Vidyo VGA2USB Capture Unit (1)
- Cable, USB A/miniA, 6ft [1.82m] (1)

The VidyoRoom Hardware



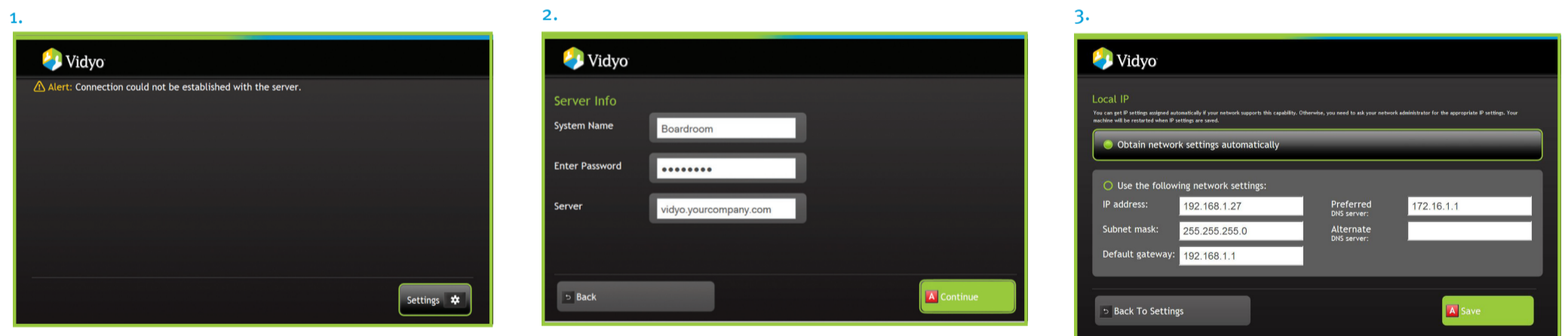
NOTE: Stands must be used when placing the unit vertically. See photo on the front page.

Do not power on HD-220 unit until Display(s) and Camera are fully connected and powered on.

1. Connect Power cable.
2. Connect Ethernet cable to ETH-0 and to your network.
3. Connect the TV using HDMI/DVI cable to DVI Display dongle and then connect to an available display port.
 - * Repeat for the secondary display
4. Connect camera:
 - * For video connection use HDMI/DVI cable
 - * For Camera Control connection:
 - a. Connect VISCA cable to camera
 - b. Connect VISCA cable to USB/Serial DB9 cable
 - c. Connect USB/Serial DB9 cable to the CAM CTRL port on the unit
5. Connect USB SpeakerPhone cable to an available USB port.

Start Up Screens*

Upon bootup you will receive the following screen and message:



- Press **OK** on your VidyoRoom remote control.
- **Enter System Name** — Arrow Right to scroll to Input Modes area, when complete, Arrow Left to return to Fields.
- **Enter Password** — Arrow Down to Password field then Arrow Right to Input Modes.
- Enter VidyoPortal **Server** IP Address or URL.
- Press **A** button on remote control, or scroll down to Continue button and then press **OK**.
- Set to *Obtain network settings automatically (DHCP)* or *Use the following network settings (Static)* and enter your appropriate information, then press **A** or scroll to Save button and press **OK**.

* See separate VidyoRoom User Guide and included multilingual CD-ROM for more details.