

Getting Started

Overview of the VidyoRoom Remote Control

The VidyoRoom comes with a remote control allowing quick key shortcuts to frequent VidyoRoom activities. It also provides the input mode/keyboard for typing information.

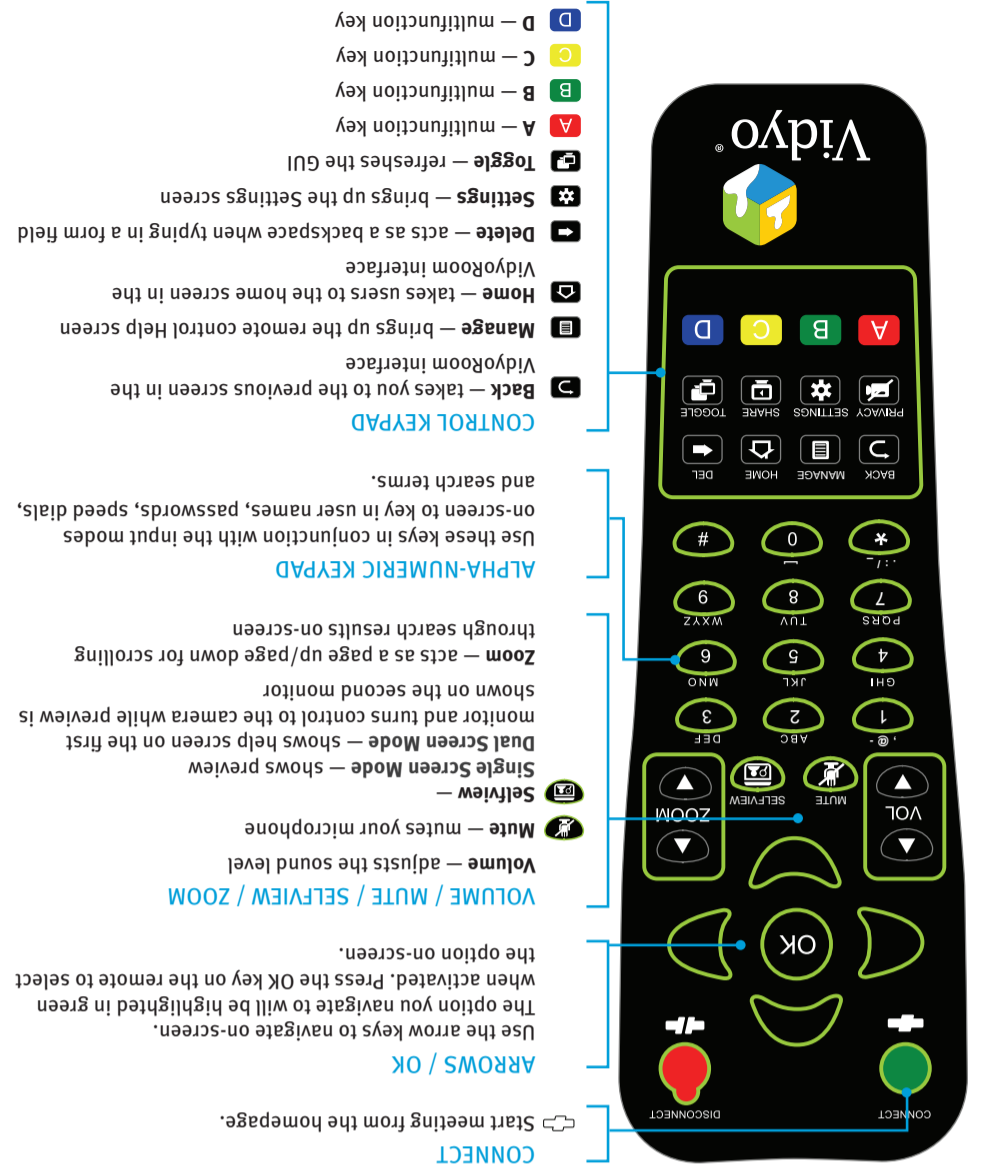
CONNECT
Start meeting from the homepage.

ARROWS / OK
Use the arrow keys to navigate on-screen. The option you navigate to will be highlighted in green when activated. Press the OK key on the remote to select the option on-screen.

VOLUME / MUTE / SELFVIEW / ZOOM
Volume — adjusts the sound level
Mute — mutes your microphone
Selfview — shows your preview

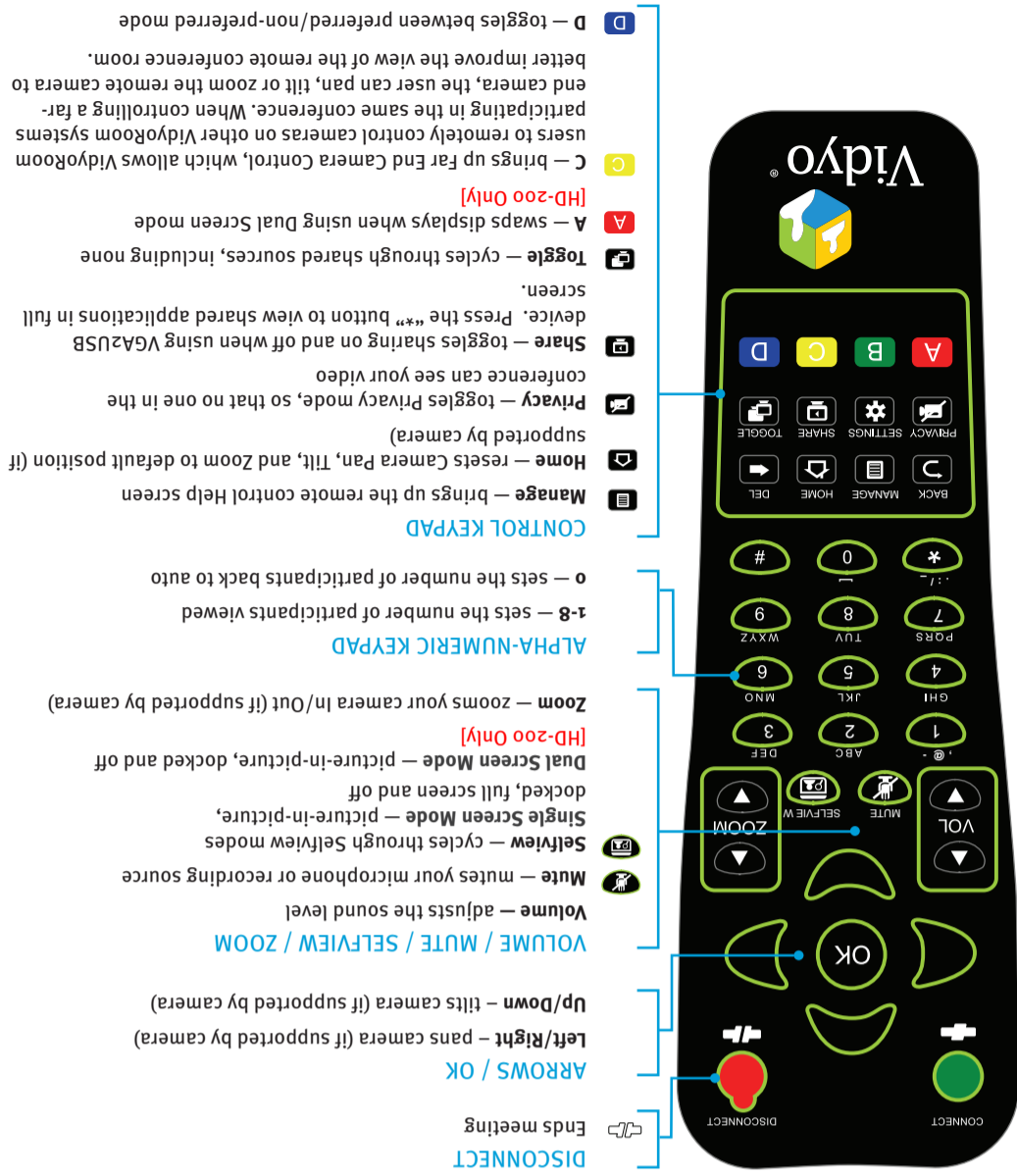
ALPHA-NUMERIC KEYPAD
Use these keys in conjunction with the input modes on-screen to key in user names, passwords, speed dials, and search terms.

CONTROL KEYPAD
Back — takes you to the previous screen in the VidyoRoom interface
Manage — brings up the remote control Help screen in the VidyoRoom interface
Delete — acts as a backspace when typing in a form field
Settings — brings up the Settings screen
Toggle — refreshes the GUI
A — multifunction key
B — multifunction key
C — multifunction key
D — multifunction key



Not in Conference

In Conference



DISCONNECT
Ends meeting

ARROWS / OK
Left/Right — pans camera (if supported by camera)
Up/Down — tilts camera (if supported by camera)

VOLUME / MUTE / SELFVIEW / ZOOM
Volume — adjusts the sound level
Mute — mutes your microphone or recording source
Selfview — cycles through Selfview modes
Single Screen Mode — picture-in-picture, docked, full screen and off
Dual Screen Mode — picture-in-picture, docked and off

ALPHA-NUMERIC KEYPAD
Zoom — zooms your camera In/Out (if supported by camera)
1-8 — sets the number of participants viewed
0 — sets the number of participants back to auto

CONTROL KEYPAD
Manage — brings up the remote control Help screen
Home — resets Camera Pan, Tilt, and Zoom to default position (if supported by camera)
Privacy — toggles Privacy mode, so that no one in the conference can see your video
Share — toggles sharing on and off when using VGA/USB device. Press the "*" button to view shared applications in full screen.
Toggle — cycles through shared sources, including none
A — swaps displays when using Dual Screen mode
C — brings up Far End Camera Control, which allows VidyoRoom users to remotely control cameras on other VidyoRoom systems participating in the same conference. When controlling a far-end camera, the user can pan, tilt or zoom the remote camera to better improve the view of the remote conference room.
D — toggles between preferred/non-preferred mode

© 2009 Vidyo, Inc. All rights reserved. Vidyo, VidyoTechnology, VidyoConference, VidyoRouter, VidyoPortal, VidyoGateway, VidyoRoom, and VidyoDesktop are trademarks of Vidyo, Inc. All other trademarks are the property of their respective owners. All specifications subject to change without notice, system specifics may vary. All images are for representational purposes only, actual products may differ.



What Is in This Box:

VidyoRoom HD-50

VidyoRoom HD-50 Accessory Kit:

- VidyoRoom Remote Control
- Batteries, AAA (2)
- Vertical Stand (1)
- Cord, Power, US, 6ft [1.82m] (1)
- Cord, Power, UK, 6ft [1.82m] (1)
- Cord, Power, Europe, 6ft [1.82m] (1)
- Cable, Ethernet, 6ft [1.82m] (1)
- Cable, HDMI/HDMI, 6ft [1.82m] (1)
- Adapter, HDMI/DVI (1)
- HD-50 Datasheet
- HD-50 Safety Statement
- HD-50 Getting Started Guide
- Vidyo Documentation CD-ROM

Optional Purchase Components:

Camera

- Logitech Webcam Pro 9000 (Provides 720p@30fps-preferred)
- Logitech Quickcam Pro 9000
- Logitech Quickcam Orbit/Sphere AF

External Infrared Receiver Kit:

- External IR USB Adapter (1)
- Cable, USB A/B, 12ft [3.65m] (1)

Screen Share Adapter Kit:

- Vidyo VGA2USB Capture Unit (1)
- Cable, USB A/miniA, 15ft [4.57m] (1)

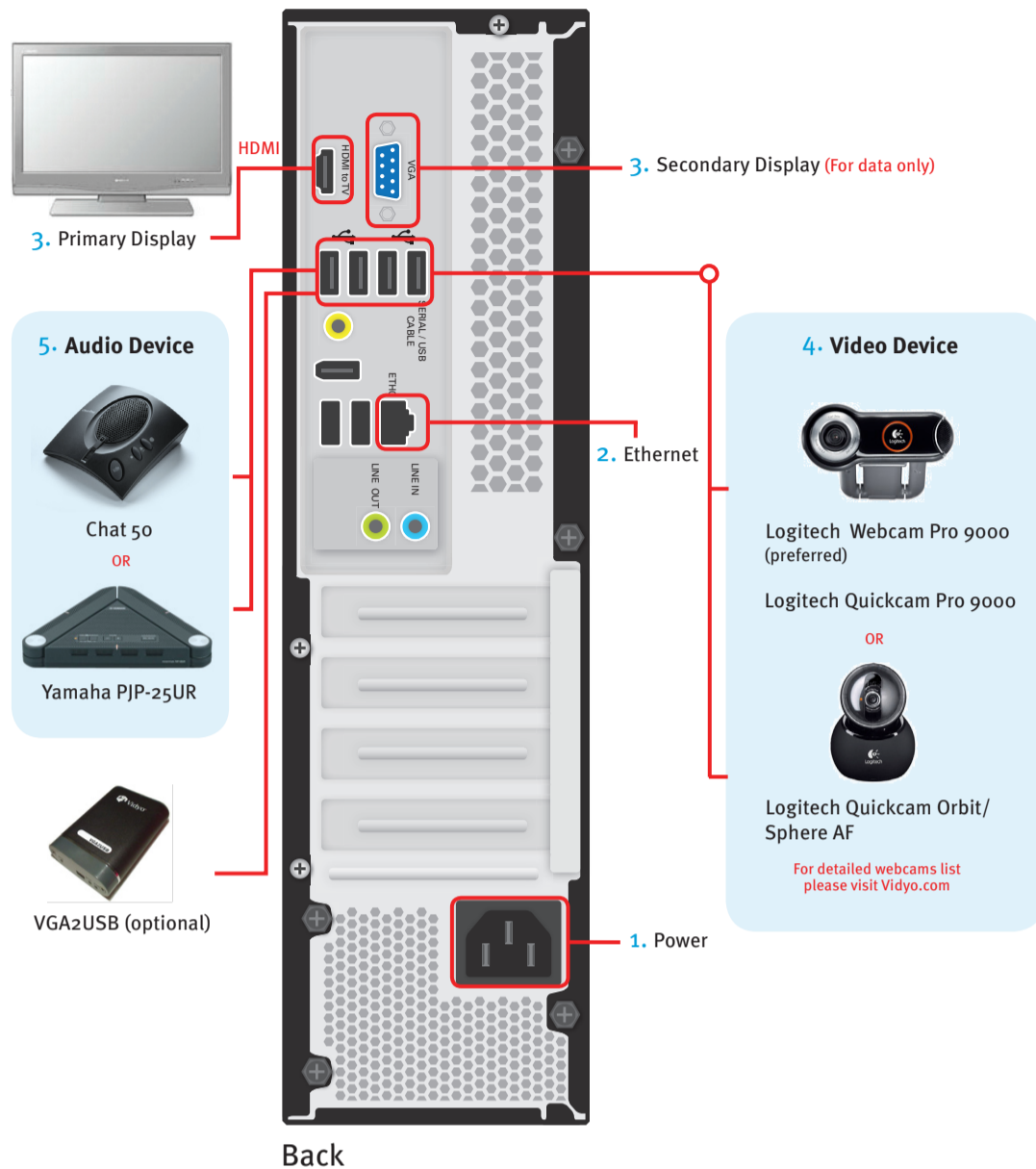
SpeakerPhone Options:

- Yamaha PJP-25UR USB Speakerphone
- ClearOne Chat 50



VidyoRoom™
HD-50

The VidyoRoom Hardware

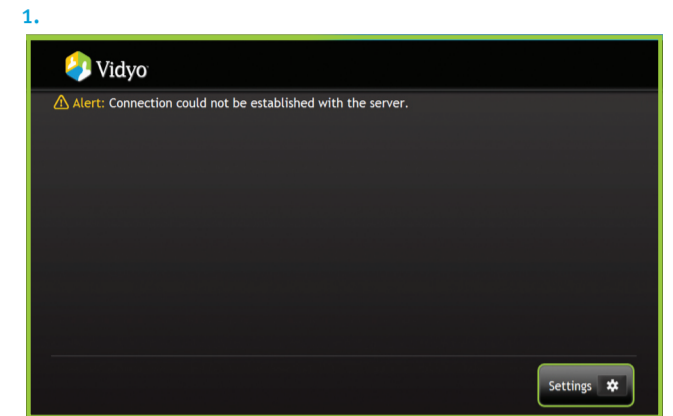


1. Connect Power cable.
2. Connect Ethernet cable to ETH-o and to your network.
3. Connect to TV using HDMI to HDMI cable on HDMI-to-TV.
NOTE: A second screen can be connected to the VGA port (2nd display is for Data Share viewing only).
4. Connect USB Webcam camera cable to an available USB port.
5. Connect USB SpeakerPhone cable to an available USB port.

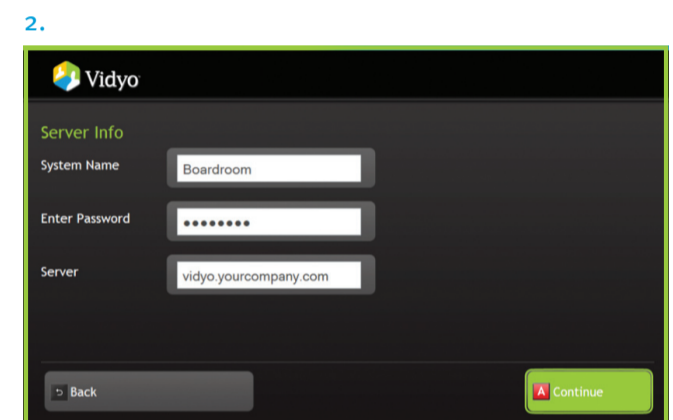


Start Up Screens*

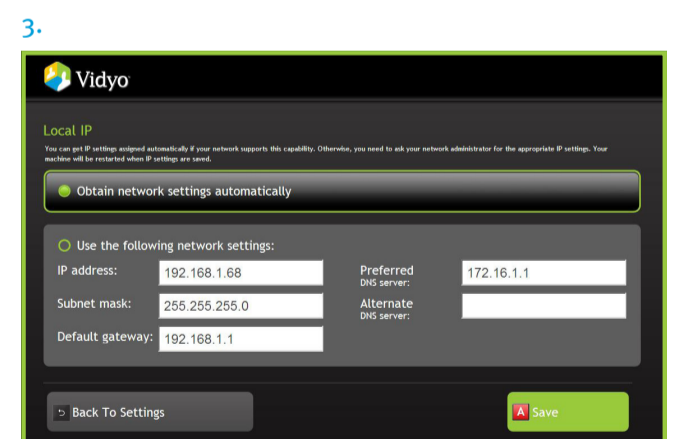
Upon bootup you will receive the following screen and message:



- Press **OK** on your VidyoRoom remote control.



- **Enter System Name** — Arrow Right to scroll to Input Modes area, when complete, Arrow Left to return to Fields.
- **Enter Password** — Arrow Down to Password field then Arrow Right to Input Modes.
- Enter VidyoPortal **Server** IP Address or URL.
- Press **A** button on remote control, or scroll down to Continue button and then press **OK**.



- Set to *Obtain network settings automatically (DHCP)* or *Use the following network settings (Static)* and enter your appropriate information, then press **A** or scroll to Save button and press **OK**.

* See separate VidyoRoom User Guide and included multilingual CD-ROM for more details.